

VersaTest Automator delivers the simplicity of VersaTest Simulator to more complex enterprise environments. These environments utilize multiple devices and applications that demand true end-to-end automated testing, as well as the flexibility to interoperate with multiple testing tools.



## Repetition in Testing

Behavioral research shows that repetitive tasks carried out by humans will eventually lead to boredom, inattention, and inaccuracy in the task being conducted. For this reason, many repetitive tasks are automated; from the building of automobiles to the testing of software. Machines can do repetitive tasks faster, more reliably and they don't get bored!

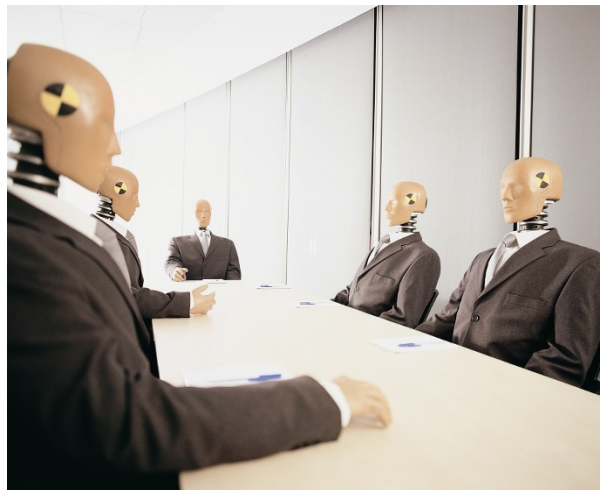
Ascert understands these issues and has integrated this knowledge into a set of tools that enables true automation. VersaTest Automator enables the execution of test cases and analysis of the results automatically to ensure that systems function correctly. One time and every time.

## Simulation Does Not Equal Automation

Implementing simulators to replace live interfaces address many of the problems inherent in repetitive tasks. But, simulation on its own does not provide automation. True automated testing needs additional levels of

management reporting, integration and control that simulators on their own cannot give.

Ascert doesn't just talk automation, they provide true automation tools for testing professionals. Ascert specializes in building automated test environments, integrating their own tools with those from third parties to carry out the repetitive tasks of regression testing, thereby freeing up test teams to work on the important task of testing new functionality.



- Turnkey solution for complex enterprise test environments, allowing integrated end-to-end testing
- No scripting required, enables use by a wide range of personnel
- High level pass/fail view of testing for management with drill-down for test detail analysis
- Supports frequent regression and performance testing with more confidence in results
- Enables a full audit trail of tests executed over time
- Interfaces to 3rd party test managers, such as HP Quality Center

## VersaTest Automator Product Overview

VersaTest Automator builds on the simplicity of VersaTest Simulator to enable integrated end-to-end testing of more complex environments in a highly automated manner. Test steps can involve multiple devices and applications, making the process of specifying and performing tests in heterogeneous environments almost trivial.

VersaTest Automator also allows the integration of Test Management packages, such as that within HP's Quality Center. By providing the linkage between these management tools and the simulators which actually execute the tests, Ascert can eliminate the gap that exists between test documentation, simulation and true test automation.

VersaTest Automator comes preloaded with two drivers. Additional drivers can be downloaded from Ascert's Driver Library and incorporated into the test environment. Custom drivers can also be developed and where appropriate, VersaTest Automator is flexible enough to incorporate other third party tools.

Use of VersaTest Automator provides phenomenal results! True automation of testing results in huge benefits. Test runs that previously took days or even weeks to execute can be completed in a matter of hours providing significant return on investment through time savings alone.

## Platform Support

VersaTest Automator will run on any platform which supports the Java Runtime Environment. This includes, Windows platforms, Linux, AIX, Sun Solaris and OSS on HP NonStop Servers.

business partner

